

HYDROSEAL



DESERT
EDITION
2017

HYDROSEAL CANADA INCORPORATED

LIMITED WARRANTY



Applicable to HYDROSEAL CANADA INCORPORATED. Plumbing Plastic Tubes, Fittings and Valves. HYDROSEAL CANADA INCORPORATED warrants each HYDROSEAL CANADA plumbing plastic fitting (including plumbing valves) to be free from defects in materials and workmanship under designed use and service for a period of five (5) years from the date of purchase. In the event any defect occurs which the owner believes is covered by this Warranty, the owner should immediately contact the nearest HYDROSEAL CANADA representative, either in writing (by email, fax or letter), or by telephone call. The owner will be instructed to return said tube, fitting or valve, at the owner's expense to HYDROSEAL CANADA INCORPORATED or an authorized HYDROSEAL CANADA representative for inspection. In the event said inspection discloses to the satisfaction of HYDROSEAL CANADA INCORPORATED that said fitting or valve is defective, a replacement shall be mailed free of charge to the owner. Claims for labor costs and other expenses required to replace such defective product or to repair any damage resulting from the use thereof will not be allowed by HYDROSEAL CANADA INCORPORATED. Our liability is limited to the price paid for the defective product. HYDROSEAL CANADA INCORPORATED will not be bound by any warranty, other than above set forth, unless such warranty is in writing.

TO THE EXTENT PERMITTED BY LAW, THIS WARRANTY SPECIFICALLY EXCLUDES INCIDENTAL AND CONSEQUENTIAL DAMAGES OF EVERY TYPE AND DESCRIPTION RESULTING FROM ANY CLAIMED DEFECT IN MATERIAL OR WORKMANSHIP, INCLUDING BUT NOT LIMITED TO, PERSONAL INJURIES AND PROPERTY DAMAGES. Some Provinces do not allow the exclusion or limitations of incidental or consequential damages, so these limitations may not apply to you. **TO THE EXTENT PERMITTED BY LAW, IMPLIED WARRANTIES OF MERCHANTABILITY AND FITNESS FOR A PARTICULAR PURPOSE ARE LIMITED IN DURATION.**

This Warranty gives you specific legal rights, and you may also have other rights which vary from country to country.

LEGAL NOTICE

This literature is published in good faith and is believed to be reliable. However, HYDROSEAL CANADA INCORPORATED does not represent and/or warrant in any manner the information and suggestions contained in this brochure. Data presented is the result of laboratory tests and field experience. HYDROSEAL CANADA INCORPORATED maintains a policy of ongoing product improvement. This may result in modifications of features and/or specifications without notice.

WTF™ and  **Hydrosel® Canada** are registered trademarks, owned and operated by HYDROSEAL CANADA INCORPORATED, Trademarks owned by HYDROSEAL CANADA INCORPORATED, the  **Hydrosel® Canada** logo, and all other trademarks, service marks and trade names of HYDROSEAL CANADA INCORPORATED appearing in this publication or in any marketing or other printed materials, including websites, are owned by HYDROSEAL CANADA INCORPORATED. HYDROSEAL CANADA INCORPORATED's trademarks, logos, service marks and trade names may only be used with prior written permission, and may not be used in connection with any product or service that is not HYDROSEAL CANADA INCORPORATED's, in any manner that is likely to cause confusion, or in any manner that disparages or discredits HYDROSEAL CANADA INCORPORATED.





PVC Tubes / Tuberias PVC-U

Hydroseal Canada's range of extruded PVC Tubes encompasses sizes from 1/4" through 24" in a variety of international standards such as ASTM, DIN, BS-EN, JIS and CNS. Our WTF Series extrusion lines also print 100% to scale ruler notches for ease of use and application in the field. PVC Tubes manufactured by Hydroseal carry markings that identify specification, size, wall thickness, pressure ratings, batch, location and time of extrusion for added traceability. Sizes available are 1/4" through 24" and 20mm through 200mm.



CPVC Tubes / Tuberias PVC-C

Hydroseal Canada's range of extruded CPVC Tubes encompasses sizes from 1/4" through 24" in a variety of international standards such as ASTM, DIN, JIS and CNS. Our WTF Series extrusion lines also print 100% to scale ruler notches for ease of use and application in the field. CPVC Tubes manufactured by Hydroseal carry markings that identify specification, size, wall thickness, pressure ratings, batch, location and time of extrusion for added traceability. Sizes available are 1/4" through 24" and 20mm through 200mm.



Clear Tubes / Tuberias Transparente

Hydroseal Canada's range of extruded Clear Tubes encompasses sizes from 1/2" through 6" in a variety of standards and dimensions. Typically our dimensions follow ASTM and DIN specifications with customized wall thicknesses. Clear Tubes manufactured by Hydroseal carry markings that identify specification, size, wall thickness, pressure ratings, batch, location and time of extrusion for added traceability. Sizes available are 1/2" through 6" and 20mm through 160mm.





Tees / Térs 90

Hydroseal Canada's Tees seamlessly allow for three way downstream or upstream connections in pipeline assembly. Available in female or flanged versions with a variety of thread patterns and selection materials such as PVC, CPVC, PVDF and PPL. Sizes begin from 1/2" through 16".



Reducing Tees / Térs 90 Reducida

Hydroseal Canada's Reducing Tees seamlessly allow for reducing three way downstream or upstream connections in pipeline assembly. Available in female or flanged versions with a variety of thread patterns and selection materials such as PVC, CPVC, PVDF and PPL. Sizes begin from 1/2" through 12".



45° Elbows / Codos 45

Hydroseal Canada's 45 Elbows seamlessly allow for forty-five degree downstream or upstream connections in pipeline assembly. Available in a variety of selection materials such as PVC, CPVC, PVDF and PPL. Sizes begin from 1/2" through 16".



90° Elbows / Codos 90

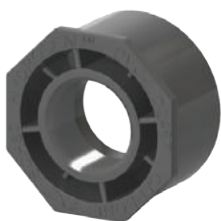
Hydroseal Canada's 90 Elbows seamlessly allow for ninety degree downstream or upstream connections in pipeline assembly. Available in female, male or flanged versions with a variety of thread patterns and selection materials such as PVC, CPVC, PVDF and PPL. Sizes begin from 1/2" through 16".





Couplings / Manguitos

Hydroseal Canada's Couplings seamlessly allow for straight downstream or upstream connections in pipeline assembly. Available in a variety of selection materials such as PVC, CPVC, PVDF and PPL. Sizes begin from 1/2" through 16".



Reducing Bushes / Reducciones

Hydroseal Canada's Reducing Bushes seamlessly allow for reduced downstream or upstream connections in pipeline assembly. Available in flush or collared patterns with a variety of selection materials such as PVC, CPVC, PVDF and PPL. Sizes begin from 1/4" through 16".



Flanges / Bridas

Hydroseal Canada's Flanges seamlessly allow for flanged downstream or upstream connections in pipeline assembly. Available in female and spigot versions with a variety of thread patterns and selection materials such as PVC, CPVC, PVDF and PPL. Sizes begin from 1/2" through 16".



Unions / Enlaces 3 Piezas

Hydroseal Canada's Unions seamlessly allow for union-type downstream or upstream connections in pipeline assembly. Available in female versions with a variety of selection materials such as PVC, CPVC, PVDF and PPL. Sizes begin from 1/2" through 4".





Nipples / missing spanish

Hydroseal Canada's Nipples seamlessly allow for threaded downstream or upstream connections in pipeline assembly. Available in a variety of thread patterns and selection materials such as PVC, CPVC, PVDF and PPL. Sizes begin from 1/4" through 6".



Male Adaptors / Adaptador Machones

Hydroseal Canada's Male Adaptors seamlessly allow for male-socket type downstream or upstream connections in pipeline assembly. Available in a variety of thread patterns and selection materials such as PVC, CPVC, PVDF and PPL. Sizes begin from 1/4" through 6".



Female Adaptors / Adaptador Hembras

Hydroseal Canada's Female Adaptors seamlessly allow for female-socket type downstream or upstream connections in pipeline assembly. Available in a variety of thread patterns and selection materials such as PVC, CPVC, PVDF and PPL. Sizes begin from 1/4" through 6".



Wyes / Tés 45

Hydroseal Canada's Wyes seamlessly allow for forty-five degree three way downstream or upstream connections in pipeline assembly. Available in a variety of selection materials such as PVC, CPVC, PVDF and PPL. Sizes begin from 1/2" through 8".





Crosses / Cruces

Hydroseal Canada's Crosses seamlessly allow for four way downstream or upstream connections in pipeline assembly. Available in a variety of selection materials such as PVC, CPVC, PVDF and PPL. Sizes begin from 1/2" through 8".



Caps / Tapones

Hydroseal Canada's Caps seamlessly allow for closed downstream or upstream connections in pipeline assembly. Available in female versions with a variety of selection materials such as PVC, CPVC, PVDF and PPL. Sizes begin from 1/2" through 12".



Brass Insert Fittings / Reforzados

Hydroseal Canada's Brass Insert Series seamlessly allow for plastic-metal threaded downstream or upstream connections in pipeline assembly. Available in a variety of threads and selection materials such as PVC and CPVC. Sizes begin from 1/2" through 2".



WTF™ Series / Bridas en WTF™ Series

Hydroseal Canada's WTF Series Backing Rings seamlessly allow for flanged downstream or upstream connections in pipeline assembly to all known existing flange patterns and standards such as ANSI, DIN, BS, ISO, CNS and JIS. Available in female versions with a variety of selection materials such as PVC, CPVC, PVDF and PPL. Sizes begin from 1/2" through 8".





SERTÃO Butterfly Valve

Válvula de Mariposa

Hydrosel Canada's all-plastic **SERTÃO Butterfly Valves** are rated at a full 200PSI. Hydrosel Canada valves are constructed from a one piece body that incorporates fully supported flanged bolt holes to prevent stressing of the mating tube flanges. Their heavy duty, industrial, robust construction stands up to the most demanding applications. The integral mounting pad ensures that any valve operator is used, lever type, worm gear or fully installed actuator.



PRECIZNO Universal Labcock Valve

Válvula de Purga

Hydrosel Canada's all-plastic **PRECIZNO Universal Labcock Valves** are designed for instrumentation, sampling, dosing and other precise applications. They are ideal for any situation and each valve comes with a universal kit that allows for FPT x FPT, FPT x HOSE, FPT x MPT, HOSE x HOSE and MPT x MPT connections. An end plug is included in the kit to prevent dust/particulates for ultra high purity needs. Full porting and 150 PSI working pressure are standard features of this precision based valve.



QUARK Compact Ball Valve

Válvula de Bola

Hydrosel Canada's all-plastic, rugged, compact **QUARK PVC Ball Valves** incorporate many design features found only on higher cost ball valves. Features such as teflon seats, full porting, and a 150PSI pressure rating are all standard on every size of Hydrosel Canada's range of Compact Ball Valves. This item is consistently certified and rated as one of our most popular and widely appreciated products. NSF listed.



KAPLAN True Union Ball Valve

Válvula de Bola

Twenty-five years of advanced experience in molding, manufacturing, logistics, transportation, materials and application have gone into Hydrosel Canada's **KAPLAN True Union Ball Valves**. This valve is completely re-engineered to address today's fast-paced world and global trade. Incorporating this tried-and-tested functionality, Hydrosel Canada has gone one step further. This Kaplan valve may be retrofitted with spare parts from our unions, flanges and Sharkfellow Ball Check Valve. With a combination of seven seals and two reversible, sturdy teflon seats, this valve is designed for superior performance.





SHARKFELLOW True Union Ball Check Valve

Válvula de Anti-Retorno

HydroselCanada's all-plastic **SHARKFELLOW True Union Ball Check Valves** prevent reversal of flow in tubing systems. They are ideal where backflow could potentially cause damage to pumps, filters, or process equipment. Our True Union Ball Check Valves operate without the need for any adjustments or settings. Line pressure moves the solid plastic ball off the elastomer seat, opening the valve. When the inlet flow stops, back pressure moves the ball back onto the seat - stopping the flow.



Simplex WTF™ Series

MISSING SPANISH

Hydrosel Canada's all-plastic **SIMPLEX WTF™ Series Swing Check Valves** have been re-engineered completely to improve upon earlier models of swing check valves. They prevent reversal of flow in piping systems vertically or horizontally and have our universal WTF™ Series bolt pattern for easy assembly with any of the major piping systems. Our Swing Check Valve operate without the need for any adjustments or settings as bolts are especially equipped with vibration dampeners. A generous cavity with twin emergency discharge ports also ensures emergency draining can take place in line, without disruption to the rest of the system.



KIYO Y Strainer

Válvula de Filtro

Hydrosel Canada's all-plastic **KIYO strainers** protect tubing system components from damage caused by dirt or debris in the process media. They cost less than other types of strainers and are light-weight and compact. Because they can often be supported by the tubeline alone, they often work and are installed in applications where other types of strainers cannot. Our strainers are supplied with a perforated plastic mesh. Stainless steel meshes are also available on request.



AQUAEDUCT Diaphragm Valve

Válvula de diafragma

Hydrosel Canada's all-plastic **A Q U A E D U C T diaphragm valves** are engineered to provide superior handling of difficult media such as corrosive fluids, abrasives and slurries. They can also be used for high purity and sanitary applications. Available in manual or automated models, these valves can be used for on/ off and throttling service and are self draining on one side so that little to no dead volume remains in the valve. Available in PVC, CPVC, PVDF and PPL.



SWING CHECK VALVE

SIMPLEX WTF™ Series

*THE LATEST AND MOST COMPREHENSIVE APPROACH TO MEET
TODAY'S NEEDS FOR RELIABLE INDUSTRIAL CHECK VALVES.*

Features

- PVC, CPVC, PVDF
- Horizontal or Vertical Installation
- Clapper Position Indicator
- Manual Override
- Built in Flange Seals
- WTF Hole Pattern
- Twin Emergency Discharges
- Self-Aligning Clapper Seals
- Completely Reversible Clapper Assembly
- Available in Sizes 3" ~ 8"



SIMPLEX WTF™ Series

Hydroseal Canada's all-plastic SIMPLEX WTF™ Series Swing Check Valves have been re-engineered completely to improve upon earlier models of swing check valves. They prevent reversal of flow in piping systems vertically or horizontally and have our universal WTF™ Series bolt pattern for easy assembly with any of the major piping systems. Our Swing Check Valve operate without the need for any adjustments or settings as bolts are especially equipped with vibration dampeners. A generous cavity with twin emergency discharge ports also ensures emergency draining can take place in line, without disruption to the rest of the system.

ELECTRIC ACTUATORS

HYDRONAUT Series

TYPE A STANDARD ON-OFF 110/220/380 VAC

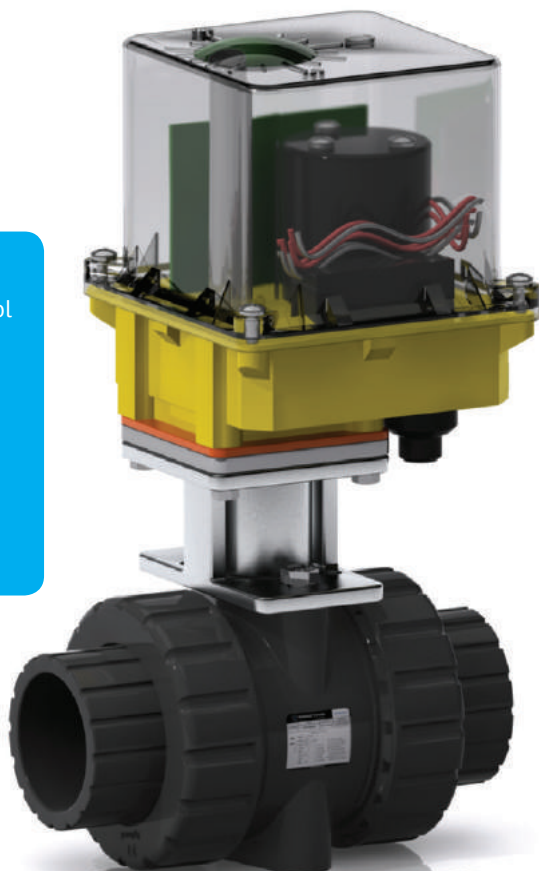
TYPE D STANDARD ON-OFF 12/24/12+24 VDC

TYPE I TURBO ON-OFF 110/220/380 VAC

TYPE L 100% DUTY ON-OFF 110/220 VAC

TYPE M MODULATING 110/220 VAC

- Suitable for aggressive media
- On-Off and modulating control
- High flow rate value and low power consumption
- Visual position indicator
- Built in manual override for safety and convenience
- IP 67 Weather Proof and Submersible Housing



THREAD SEALANTS

General description

Polytetrafluoroethylene (PTFE), is an engineering plastic known for its low coefficient of friction, inertness to chemicals, and resistance to heat. With a low friction surface, second only to ice, PTFE also boasts outstanding electrical, insulative and dielectric properties. When coated onto a fiber-glass fabric, it becomes dimensionally stable and durable. The addition of silicone or



acrylic adhesive eliminates the need for mechanical fastening. This unique combination of materials, commonly referred to as "PTFE tape", is also resistant to tears, punctures, and abrasions. For these reasons, they are widely used in packaging, chemical processing, thread sealing and aerospace industries.

One of the defining characteristics of PTFE is how good it is at defeating friction. The use of PTFE tape in tapered tube threads performs a lubricating function, which more easily allows the threads to be screwed together, to the point of deformation, which is what creates the majority, if not all, of the seal.

PTFE tape is appropriate for use on tapered threads, where the thread itself provides the surface seal. It is not required on parallel threads - parallel threads will not effectively seal themselves, even with tape. The sealing force on a tapered thread comes from the wedge action, that of a parallel thread is merely the axial force from the nut and is inadequate for a good seal. For this reason parallel threads are only to be used to mechanically clamp some other form of seal. Such seals do not require additional tape, and applying tape to their threads has no purpose.

Standards

There are two US standards for determining the quality of any PTFE tape. MIL-T-27730A (an obsolete military specification still commonly used in industry in the US) requires a minimum thickness of 3.5 mils and a minimum PTFE purity of 99%. The second standard, A-A-58092, is a commercial grade which maintains the thickness requirement of MIL-T-27730A and adds a minimum density of 1.2 g/cc. Relevant standards may vary between industries; tape for gas fittings (to UK gas regulations) is required to be thicker than that for water. Although PTFE itself is suitable for use with high-pressure oxygen, the grade of tape must also be known to be free from grease.

JOINTING CALLIBRE SYSTEM

*ANYBODY CAN MAKE SOMETHING COMPLEX;
IT TAKES REAL EFFORT TO MAKE SOMETHING SIMPLE.*

Features

- No messy part numbers, no confusing terminology.
- Infographic approach to jointing selection.
- Applicable for PVC, CPVC, ABS and transition solvents.
- Applicable for Cleaners, Primers and PTFE Thread sealants.
- The right product for your application every single time.
- For joints from 1/4 ~ 30"



HYDROSEAL

22 calibre

2"

40 calibre

8"

45 calibre

12"

50 calibre

30"

CALLIBRE SYSTEM



Hydroseal® Canada
re-engineering



40 Calibre PVC / Adhesivo PVC-U

Hydrosel Canada's **40 Calibre PVC** cement is a clear, heavy bodied, medium setting, high strength PVC solvent cement for all classes and schedules of tube and fittings with interference fit through 8 inch diameter. Can be used without primer on non-pressure systems if local codes permit. Listed by NSF International for compliance with ASTM D-2564 , NSF/ANSI Standard 14 for use on potable water, drain, waste, vent and sewer applications. Available in sizes: 4oz, 8oz, 16oz and 32oz.



45 Calibre PVC / Adhesivo PVC-U

Hydrosel Canada's **45 Calibre PVC** cement is a clear or grey, extra heavy bodied, medium setting, high strength PVC solvent cement for all classes and schedules of tube and fittings with interference fit through 12 inch diameter. Can be used without primer on non-pressure systems if local codes permit. Listed by NSF International for compliance with ASTM D-2564 , NSF/ANSI Standard 14 for use on potable water, drain, waste, vent and sewer applications. Available in sizes: 4oz, 8oz, 16oz and 32oz.



50 Calibre PVC / Adhesivo PVC-U

Hydrosel Canada's **50 Calibre Monster PVC** cement is a grey, super heavy bodied, slow setting, thixotropic (paste-like), high strength PVC solvent cement for all classes and schedules of tube and fittings with interference fit through 30 inch diameter. Listed by NSF International for compliance with ASTM D-2564 , NSF/ ANSI Standard 14 for use on potable water, drain, waste, vent and sewer applications. Available in sizes: 4oz, 8oz, 16oz and 32oz.





40 Callibre CPVC / Adhesivo PVC-C

Hydroseal Canada's 40 Callibre CPVC cement is an orange, heavy bodied, medium setting, high strength CPVC solvent cement for all classes and schedules of tube and fittings with interference fit through 8 inch diameter. It has good gap filling properties and its medium set allows more working time in warm weather. Listed by NSF International for compliance with ASTM F-493, NSF/ANSI Standard 14 for use on potable water, drain, waste, vent and sewer applications. Available in sizes: 4oz, 8oz, 16oz and 32oz.



45 Callibre CPVC / Adhesivo PVC-C

Hydroseal Canada's 45 Callibre CPVC cement is a clear or grey, extra heavy bodied, medium setting, high strength CPVC solvent cement for all classes and schedules of tube and fittings with interference fit through 12 inch diameter. It is recommended for industrial tubing systems and chemical applications. Listed by NSF International for compliance with ASTM D-2564, NSF/ANSI Standard 14 for use on potable water, drain, waste, vent and sewer applications. Available in sizes: 4oz, 8oz, 16oz and 32oz.



90 Callibre Primer / 22 Callibre Cleaner Disolvente

Hydroseal Canada's 90 Callibre and 22 Callibre primers and cleaners complement and facilitate tube assembly and jointing. Use of primers is especially important and key in larger pipeline installations and industrial chemical applications. Use of cleaner prior to solvent welding ensures removal of dust, dirt, debris and grease which typically result in poor connections and downtime. Listed by NSF International for compliance with ASTM F-656, NSF/ANSI Standard 14 for use on potable water, drain, waste, vent and sewer applications. Available in sizes: 8oz, 16 oz and 32oz.



HYDROSEAL

ventas@hydroseal.cl
www.hydroseal.cl



GD 1.05 DESERT EDITION

©HYDROSEAL CANADA INCORPORATED 2017

